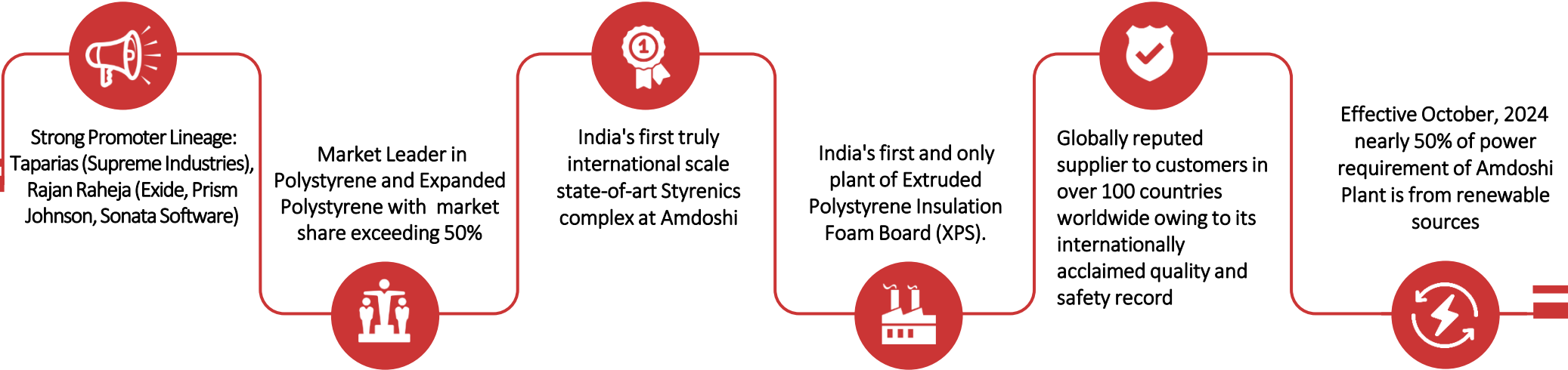


# Earnings Presentation

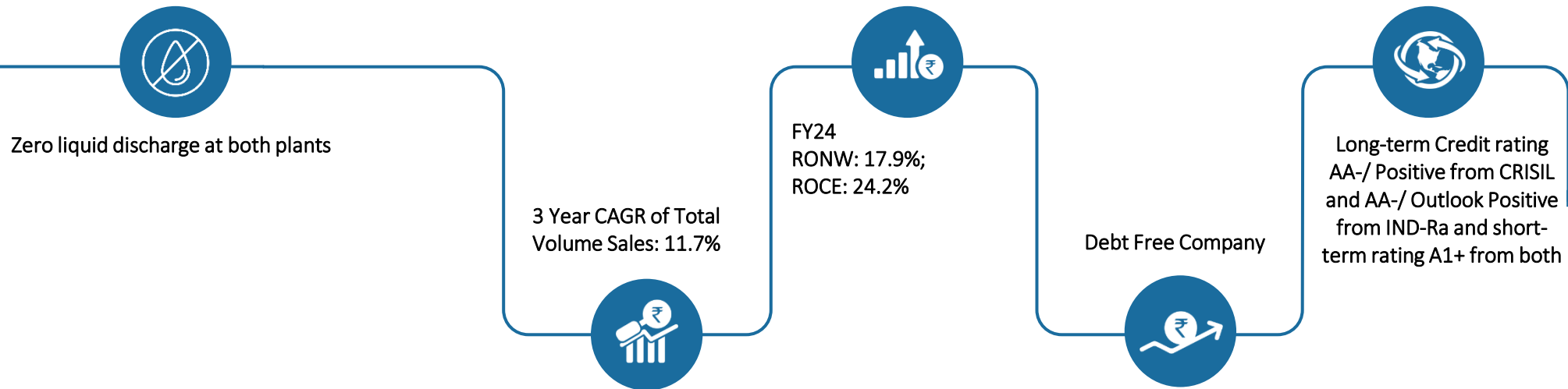
## Q3/9M-FY25

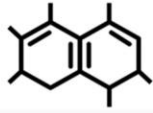


# Supreme Petrochem Limited

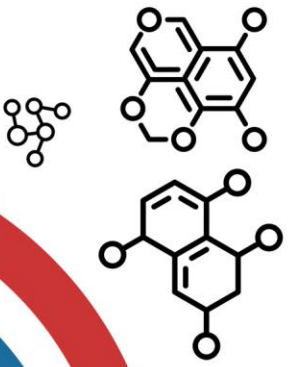


## Supreme Petrochem Limited





# COMPANY OVERVIEW

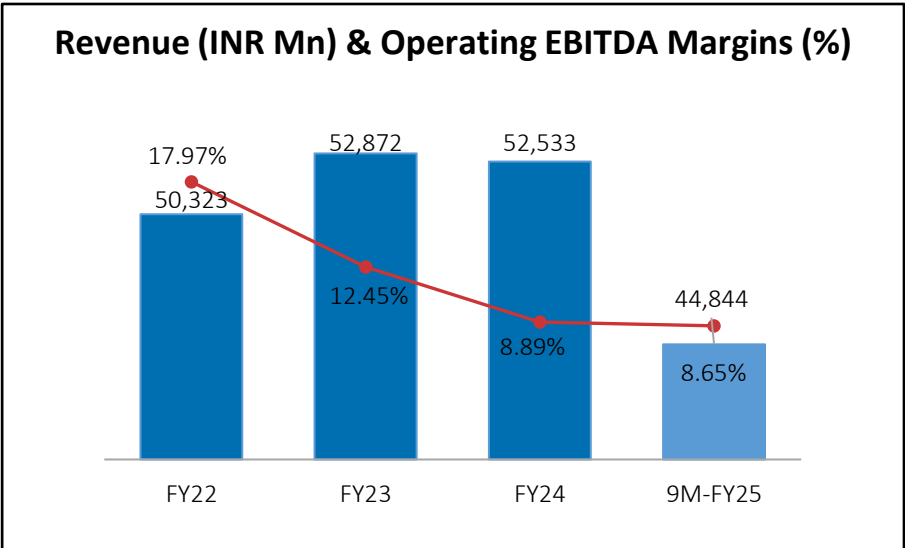


# Supreme Petrochem Limited



# Company Overview

- SPL was formed as joint venture between the Supreme Industries Ltd. and the well diversified Rajan Raheja Group.
- SPL has two manufacturing locations - village Amdoshi, Taluka Roha, Maharashtra and Manali New Town, Chennai, Tamil Nadu.
- Amdoshi plant production range includes : Polystyrene, Expandable Polystyrene(EPS), Speciality Compounds and masterbatches, Extruded Polystyrene(XPS) with total effective installed capacity of 422000 TPA.
- SPL's plant at Manali New Town, produces EPS with effective installed capacity of 33,000 TPA.
- First phase of mABS project and EPS Phase II expansion when completed will take overall capacity at Amdoshi complex to 522,000 MTA.
- In line with its commitment to sustainability, SPL has setup a 12.5 MW solar power plant in joint venture with Tata Renewable Energy Ltd. This along with rooftop solar power plant has helped to reduce its reliance on conventional energy sources for its Amdoshi plant.



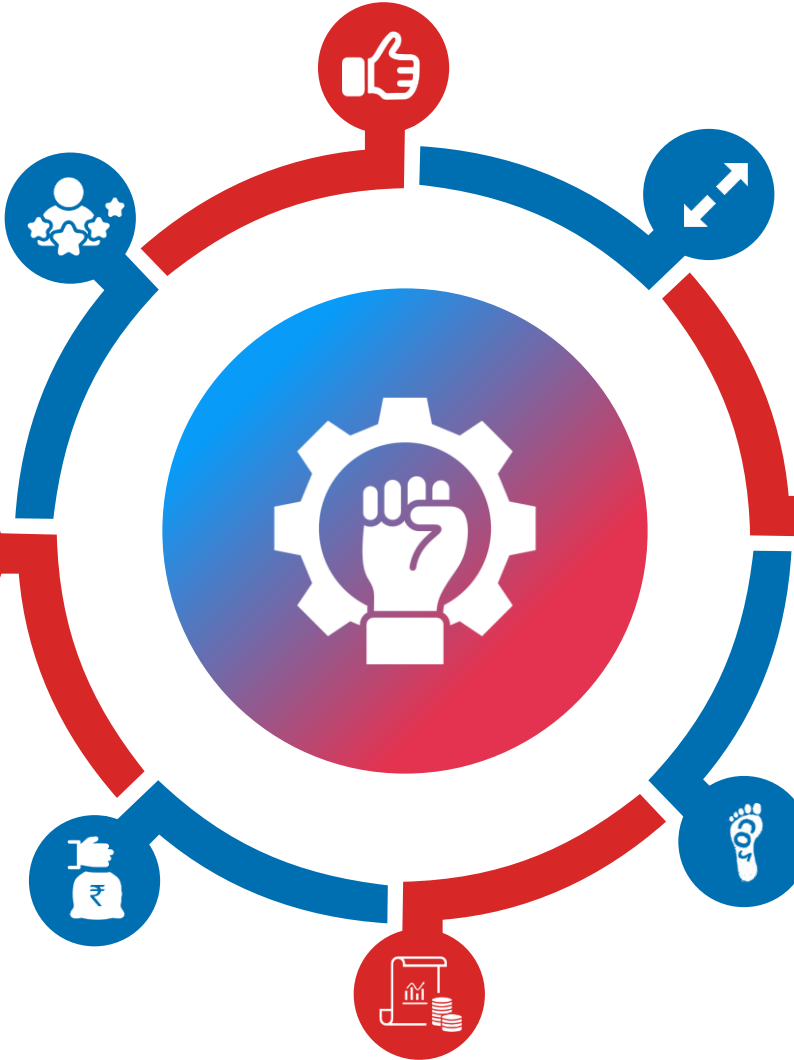
# Key Strengths

India's Largest producer of Polystyrene & Expandable Polystyrene with state-of-art fully automated plant.

mABS project with 70,000 MTA capacity in technical licensing arrangement with Versalis with low carbon foot print is expected to be mechanically completed by end of March, 2025 with commissioning in first quarter of FY26.

Strong balance sheet, debt free & meeting all capital expenditure through internal sources.

With captive generation through JV with Tata Power going operational 50% of power requirement at its Amdoshi Plant is being met from renewable energy sources.



Market leader in PS and EPS with over 50% plus market share

Well placed to benefit from the growth in the domestic consumer durables, automobiles, exports and excellent customer relations

Established strong relationship with leading OEM and ODMs for regular supply of products

First and only producer of XPS Boards in India

## Capacity Expansion/Diversification



First line of mABS project with 70000 MTA capacity in technical collaboration with Versalis is progressing well. The project will be mechanically completed by end March 2025 and commissioning in first quarter of FY26.



The company is undertaking capex for enhancing Compounds and Masterbatches and EPS capacities at its Amdoshi Plant to cater to the additional demand.



Acquired 96 Acres of land at village Munak, Tehsil-Ballah, District Karnal, Haryana to put up a styrenics complex including downstream products which shall be implemented in phases over 36 to 48 months post receipt of statutory clearances at an estimated cost of INR 800Cr to be funded from internal generation



# Board Of Directors

**Shri Mahaveer Prasad Taparia**  
Chairperson

**Shri Rajan B. Raheja**  
Non-Executive - Non-Independent

**Shri Bajranglal Taparia**  
Non-Executive - Non-Independent

**Shri Shivratn J Taparia**  
Non-Executive - Non-Independent

**Shri Akshay Rajan Raheja**  
Non-Executive - Non-Independent

**Shri KV Mujumdar**  
Whole Time Director

**Shri Rajeev M Pandia**  
Non-Executive - Independent

**Shri Basavaraj Ningappa Bankapur**  
Non-Executive - Independent

**Ms. Rita Amitabh Teotia**  
Non-Executive - Independent

**Shri Sanjay Rangrao Chougule**  
Non-Executive - Independent

**Prof. (Dr.) Anup Kumar Ghosh**  
Non-Executive - Independent

**Ms. Mona Ninad Desai**  
Non-Executive - Independent

# Spreading awareness about benefits and recyclability of EPS packaging

- Company collaborates with NGOs for creating awareness about collection and recyclability of EPS.
- Works with several NGOs to improve collection mechanism.
- Surveyed recyclers across 17 major states in the country with objective of helping them register with State/Central Pollution Control Boards and bring players in the unorganised sector into organised sector of recycling business.
- Conducted cleanup drives and education workshops at different parts of the country to reach masses.

Recycled EPS is used in various applications like photo-frames, hangars, wall panels for interior decorations.

**Worried about the THERMOCOL used during GANPATI DECORATION?**

**Connect with us! We will get it recycled.**  
For more details: 97691 81218

**Mumbai / Thane / Navi Mumbai**

**ग्रुप ग्रामपंचायत चौक शून्य कचरा गाव मोहीम**

**सुका टाकाऊ वस्तू पुनर्वापर संकलन गाडी**

सुका टाकाऊ वस्तुचे पुनर्वापर करून वसुंधरा संवर्धन करा. प्लास्टिक रॅपर, प्लास्टिक पॅकिंग, प्लास्टिक डब्बे, काच, थर्मोकॉल, पेपर, पुठ्टे, इलेक्ट्रॉनिक टाकाऊ वस्तू पुनर्वापर साठी देऊन घर, गाव आणि धरती स्वच्छ आणि सुंदर करा.

**माझे गाव माझी जवाबदारी**

सौजन्य

**श्रीकहाला** SUPREME PETROCHEM LTD

**SUPREME PETROCHEM LTD**  
Recycling Thermocol for a Cleaner Tomorrow

**PRPL**  
PLASTICS RECYCLING PREMIER LEAGUE  
An Initiative by Supreme Petrochem Ltd.

**Ab Thermocol Recycle Karega Bharat**

**Thermocol is Plastic and 100% Recyclable.**

- Collect Thermocol Waste
- Send it for Recycle
- Be Part of PRPL

Contact : 7798371522

NGO Partner: श्रीकहाला Initiative by: SUPREME PETROCHEM LTD

**PRPL**  
PLASTICS RECYCLING PREMIER LEAGUE  
An Initiative by Supreme Petrochem Ltd.

**1ST TIME IN INDIA**

Collection Partner: SUPREME PETROCHEM LTD Knowledge Partners: श्रीकहाला

An event to create awareness about plastic waste management and recycling  
JOIN US TO BECOME AMBASSADOR OF BEHAVIORAL CHANGE

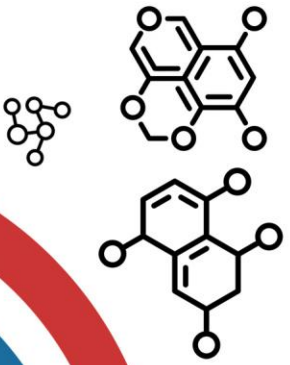
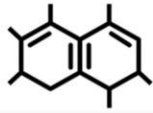
**PRPL**  
Recycle, Play, Win!

“ Recycle 1000 kg of Thermocol and Compete in the Ultimate Under-14 Cricket Tournament! ”

Swing for Sustainability: Hit Thermocol Waste Out of the Park!

**Be the Champions of Change – Join PRPL!**





# BUSINESS OVERVIEW



# Supreme Petrochem Limited

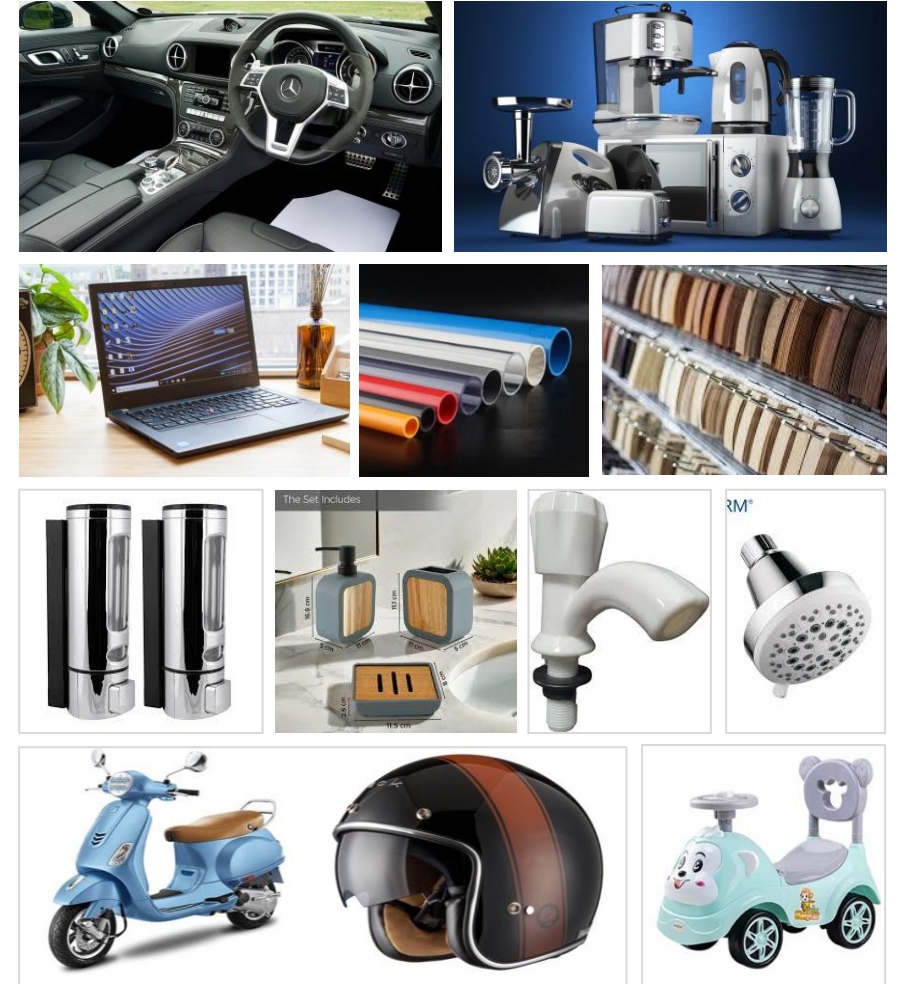
# Acrylonitrile Butadiene Styrene (ABS) – New Product Launch

- mABS project with a capacity of 70KTA being set-up under License & Basic Engineering Design of M/S Versalis-Eni Chemical Group is expected to be mechanically completed by March 31, 2025 with commissioning in first quarter of FY26
- Mass Acrylonitrile Butadiene Styrene (mABS) is an opaque engineering plastic with uses in electronic housing, small appliances, consumer products, toys, computers and automotive applications.
- mABS delivers good impact strength. It offers a high degree of surface quality and exhibits good chemical resistance properties.
- Bathroom fittings, e- scooters are the new application with growing demand.

A FIRST OF ITS KIND Continuous Production Process for mABS in India, with following benefits-

ATRIBUTES	BENEFITS
• Better Lot-to-lot Consistency	• Less Scrap
• Lower Base Colour & More Efficient Coloring	• Less Pigment Requirement
• Better Uv Stability	• Improved Uv Absorption
• Better Thermal Stability	• Lower Regrinding
• Lower Gels	• Improved Surface Quality
• Lower Voc's (Volatile Organic Comounds)	• Less Odour (Vehicles , Car Interiors)
• Higher Melt Strength	• Improved Thermoforming

## ABS APPLICATIONS



# Our Products: GPPS and HIPS

## General Purpose Polystyrene (GPPS)

GPPS is one of the most widely used transparent polymers suitable for injection molding and extrusion applications.

- Properties:
- a) Excellent processability and good dimensional stability
  - b) Very high clarity and aesthetics
  - c) FDA Compliant – Non-Toxic

Applications: Components in consumer durables like Refrigerators, Stationery, Writing Instruments, Rigid Sheets, Medical Disposables, Beads, bangles and Household Items.

## APPLICATIONS



## High Impact Polystyrene (HIPS)

HIPS is a tough plastic that has excellent impact strength, high stiffness and excellent moldability but opaque.

Properties: Excellent processability, wide processing window, well-balanced mechanical properties and high flexural strength are some of its key properties.

Applications: Consumer durables like Refrigerators cabinets/ components, Air conditioners, cooler bodies, toys, computer accessories, food packaging, dairy packaging.





# Our Products: EPS and XPS

## Expandable Polystyrene (EPS)

EPS is solid beads of Polystyrene impregnated with Pentane gas. When processed, these beads expand and fuse to become foam called "Thermocol".

Properties: It is a lightweight material with good insulation characteristics and cushioning properties.

Applications: Widely used in packaging consumer durables, Fish and Fruit packaging and in construction for energy-efficient insulation including Cold Storages. EPS can be molded into any shape and are used in helmets, Infant car seats, 3D Panels for construction and Geofoam for Road building.

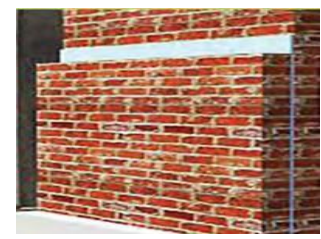
## Extruded Polystyrene (XPS) INSUboard

The XPS thermal insulation board is a rigid foam board having a closed cell structure produced in a fully automated continuous extrusion process.

Properties: High compressive strength, higher R value and low water absorption makes it an ideal insulating material for wall, roofs and floors.

Applications: Main applications are Insulation of Commercial & Residential buildings for energy conservation – An important product for combating climate change and reduction in emission of Co<sub>2</sub>. Other applications are in refrigerated vehicles, vaccine boxes and medicine packing boxes, tunnel linings etc.

### APPLICATIONS





# Our Products: Compounds & Masterbatches

## Compounds

These are ready to use grades wherein specific / custom stated properties are introduced into the polymer by used of functional minerals & additives. Various formulations are produced in GPPS, HIPS, SAN, ABS, PP and Nylon. Properties include resistance to fire & UV light, toughened / impact modified, low shrinkage, improved load bearing capacity & high heat resistance

### Benefits:

Proprietary grades specific to the customer/applications can be formulated. Lot to lot consistency is guaranteed for all physical properties and regulatory compliances.

### Applications:

Custom colour grades with UV stabilisation are used in appliances like Air conditioners, Washing Machine, TV, Water heaters, Water purifiers and Kitchen appliances. Flame retardant grades are used in Electrical switch accessories, Automotive & Industrial Battery. Mineral & Glass filled grades are used in Automotive exterior & interior parts, under the hood parts, Blower & fan impellers, and textile bobbins.

## Masterbatches

These are concentrates of colourants, speciality minerals and performance additives which are used for enhancing specific characteristics of polymers, as demanded by the end application.

### Benefits:

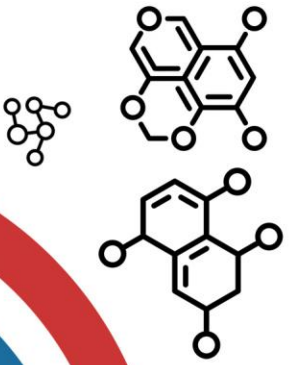
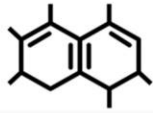
In the final product, Masterbatches help in reduction of material & energy cost, improves aesthetic properties like colour, brightness & surface finish; and enhances properties like resistance to UV & thermal degradation, blocking & printing, resistance to static electricity & fire, resistance to fouling due to microbes.

### Applications:

White & Additive Masterbatches, are used in Packaging of Dairy, Oil & Ghee, Pulses & Grain, Cereals & Juices, Medical, Cosmetics, Fertiliser & Pesticides. Black masterbatches, in pipes & films, are predominantly used in Agriculture & Irrigation applications Colour Masterbatches are used to improve the aesthetic appeal in various Appliances, Automotive parts, Electrical switch accessories, Kitchenware, Tableware, Gift, Toys & Stationary, Geotextiles.

## APPLICATIONS





# FINANCIAL OVERVIEW



# Supreme Petrochem Limited



# Q3/9M-FY25 Financial Highlights

Q3-FY25 Financial Highlights					9M-FY25 Financial Highlights				
14,053 Operating Income	993 Operating EBITDA	1,167 Total EBITDA*	7.07% Operating EBITDA Margins	8.30% Total EBITDA Margins	44,844 Operating Income	3,880 Operating EBITDA	4,425 Total EBITDA*	8.65% Operating EBITDA Margins	9.87% Total EBITDA Margins
714 Net Profit		5.08% PAT Margins		3.79 Diluted EPS	2,836 Net Profit		6.32% PAT Margins		15.08 Diluted EPS

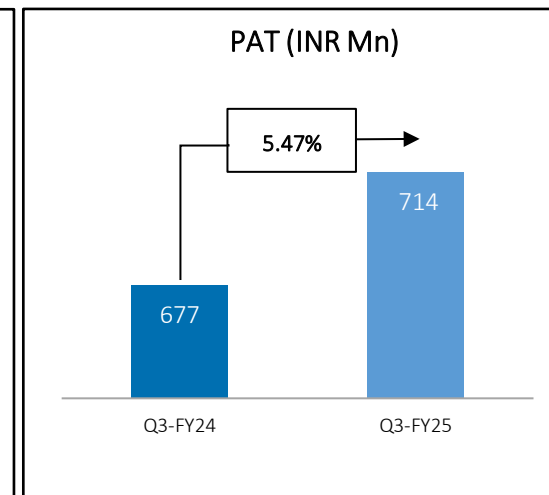
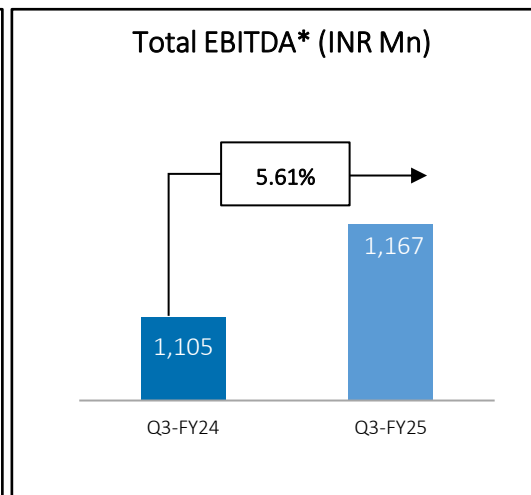
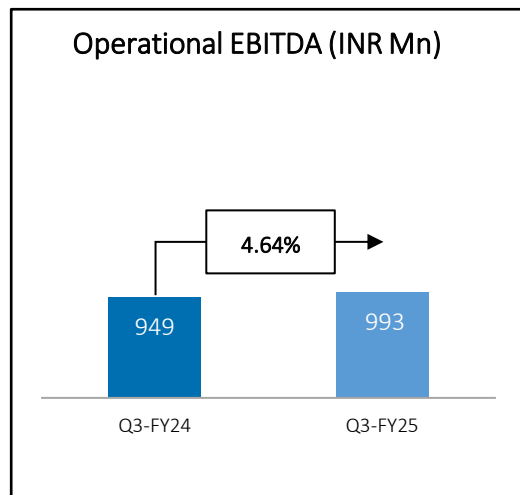
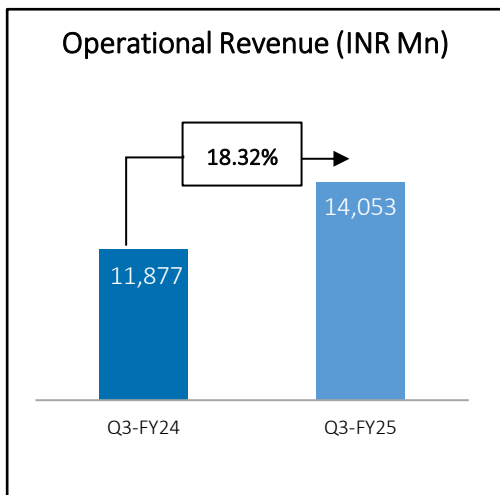
- SPL has INR 6,798 Mn of cash & cash equivalents, bank deposits and investments in various mutual fund schemes
- The Company continues to remain debt free and all capital expenditure requirements have been met through internal accruals and reserves.

\*Total EBITDA includes other income

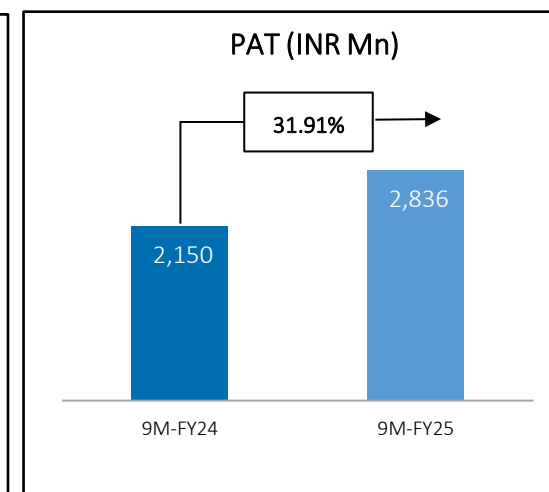
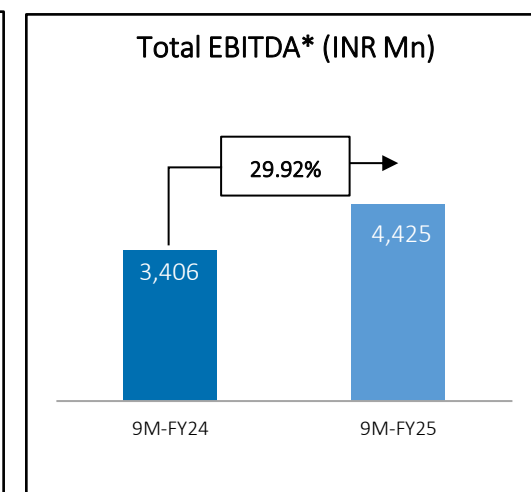
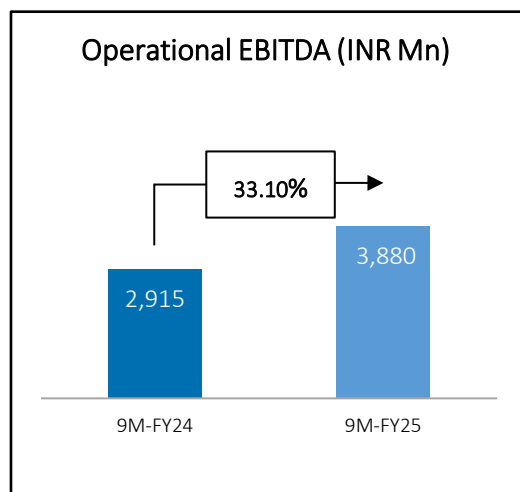
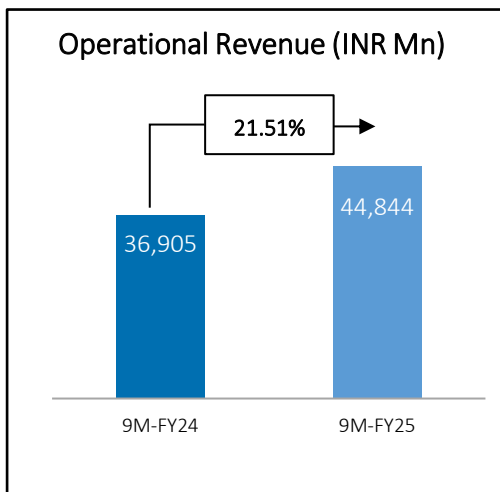
# Q3/9M-FY25 Financial Highlights



Q3-FY25



9M-FY25



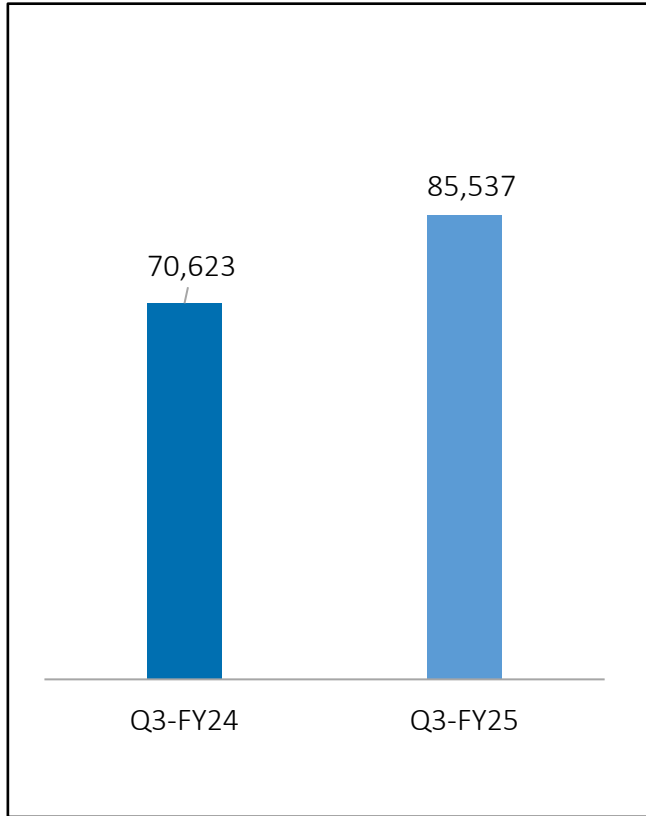
\*Total EBITDA includes other income



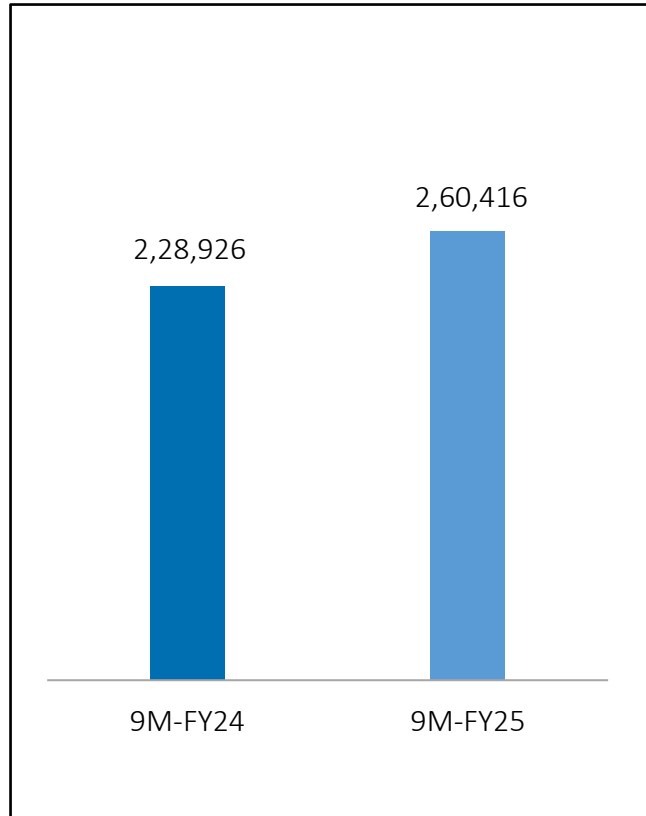
# Volume Trend

## Quantities Sold in MT

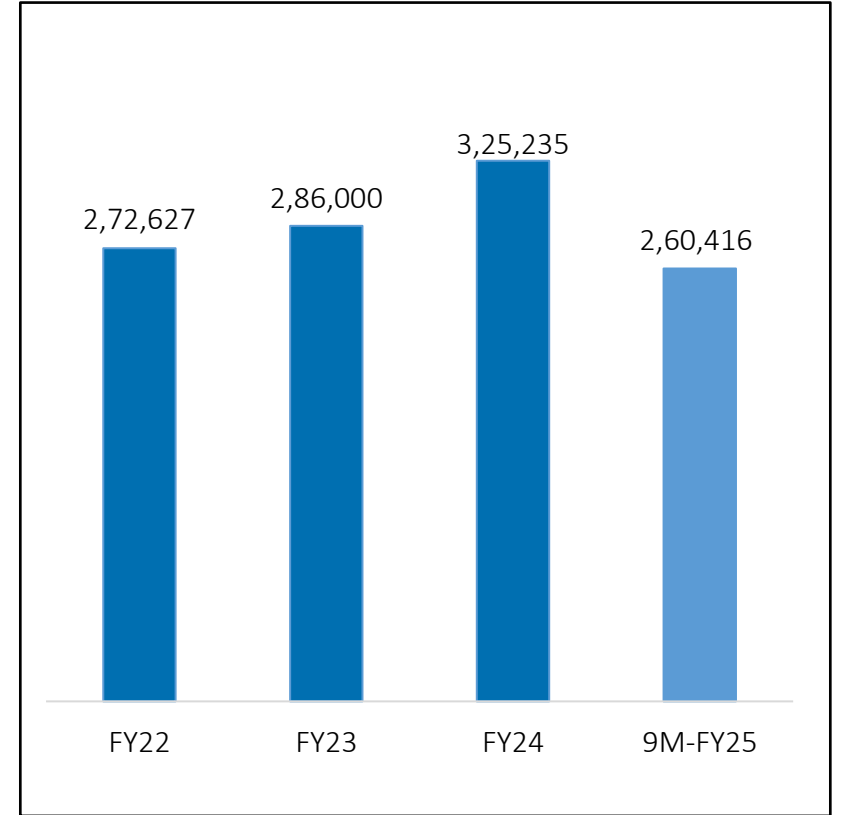
### Q3-FY25



### 9M-FY25



### Annual Trend



# Q3/9M-FY25 Operational Highlights



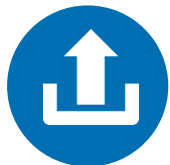
Company's sales volumes of manufactured products increased by 21.12% Y-o-Y to 85,537 MT in Q3-FY25 as compared to 70,623 MT in Q3-FY24.



Company's sales volumes of manufactured products increased by 13.72% Y-o-Y to 2,60,416 MT in 9M-FY25 as compared to 2,28,926 MT in 9M-FY24.



Styrene Monomer prices during the quarter were on a declining trend, putting some pressure on margins.



Implementation of 1st Phase of mABS Project with 70,000 TPA capacity is progressing well and the mechanical completion is expected by end of March 2025 with commissioning scheduled for Q1-FY26.



# Quarterly Financial Performance

Particulars (INR Mn)	Q3-FY25	Q3-FY24	Y-o-Y	Q2-FY25	Q-o-Q
Revenue from Operations	14,053	11,877	18.32%	15,056	(6.66)%
Total Expenses (Include stock-in-trade)	13,060	10,928	19.51%	13,804	(5.39)%
Operating EBITDA	993	949	4.64%	1,252	(20.69)%
<i>Operating EBITDA Margins (%)</i>	<i>7.07%</i>	<i>7.99%</i>	<i>(92)Bps</i>	<i>8.32%</i>	<i>(125)Bps</i>
Other Income	174	156	11.54%	166	4.82%
Total EBITDA*	1,167	1,105	5.61%	1,418	(17.70)%
<i>Total EBITDA Margins (%)</i>	<i>8.30%</i>	<i>9.30%</i>	<i>(100)Bps</i>	<i>9.42%</i>	<i>(112)Bps</i>
Depreciation and Amortization expenses	171	151	13.25%	170	0.59%
Finance costs	35	30	16.67%	28	25.00%
PBT	961	924	4.00%	1,220	(21.23)%
Tax	247	247	NA	317	(22.08)%
PAT	714	677	5.47%	903	(20.93)%
<i>PAT Margins (%)</i>	<i>5.08%</i>	<i>5.70%</i>	<i>(62)Bps</i>	<i>6.00%</i>	<i>(92)Bps</i>
Other Comprehensive Income	-	(2)	NA	6	NA
Total Comprehensive Income	714	675	5.78%	909	(21.45)%
Diluted EPS (INR)	3.79	3.60	5.28%	4.80	(21.04)%
Nominal Value of Share	2	2	NA	2	NA

\*Total EBITDA includes other income



# YTD Financial Performance

Particulars (INR Mn)	9M-FY25	9M-FY24	Y-o-Y
Revenue from Operations	44,844	36,905	21.51%
Total Expenses (Include stock-in-trade)	40,964	33,990	20.52%
Operating EBITDA	3,880	2,915	33.10%
<i>Operating EBITDA Margins (%)</i>	<i>8.65%</i>	<i>7.90%</i>	<i>75Bps</i>
Other Income	545	491	11.00%
Total EBITDA*	4,425	3,406	29.92%
<i>Total EBITDA Margins (%)</i>	<i>9.87%</i>	<i>9.23%</i>	<i>64Bps</i>
Depreciation and Amortization expenses	505	435	16.09%
Finance costs	95	55	72.73%
PBT	3,825	2,916	31.17%
Tax	989	766	29.11%
PAT	2,836	2,150	31.91%
<i>PAT Margins (%)</i>	<i>6.32%</i>	<i>5.83%</i>	<i>49Bps</i>
Other Comprehensive Income	1	(5)	NA
Total Comprehensive Income	2,837	2,145	32.26%
Diluted EPS (INR)	15.08	11.43	31.93%
Nominal Value of Share	2	2	NA

\*Total EBITDA includes other income





# Historical Income Statement

Particulars (INR Mn)	FY22	FY23	FY24	9M-FY25
Revenue from Operations	50,323	52,872	52,533	44,844
Total Expenses (Include stock-in-trade)	41,282	46,290	47,865	40,964
Operating EBITDA	9,041	6,582	4,668	3,880
<i>Operating EBITDA Margins (%)</i>	<i>17.97%</i>	<i>12.45%</i>	<i>8.89%</i>	<i>8.65%</i>
Other Income	305	589	681	545
Total EBITDA*	9,346	7,171	5,349	4,425
<i>Total EBITDA Margins (%)</i>	<i>18.57%</i>	<i>13.56%</i>	<i>10.18%</i>	<i>9.87%</i>
Depreciation and amortisation expenses	419	466	595	505
Finance costs	48	36	72	95
PBT	8,878	6,669	4,682	3,825
Tax	2,245	1,688	1,217	989
PAT	6,633	4,981	3,465	2,836
<i>PAT Margins (%)</i>	<i>13.18%</i>	<i>9.42%</i>	<i>6.60%</i>	<i>6.32%</i>
Other Comprehensive Income	(9)	(4)	(20)	1
Total Comprehensive Income	6,624	4,977	3,445	2,837
Diluted EPS (INR)	35.27	26.49	18.43	15.08
Nominal Value of Share	2	2	2	2

\*Total EBITDA includes other income

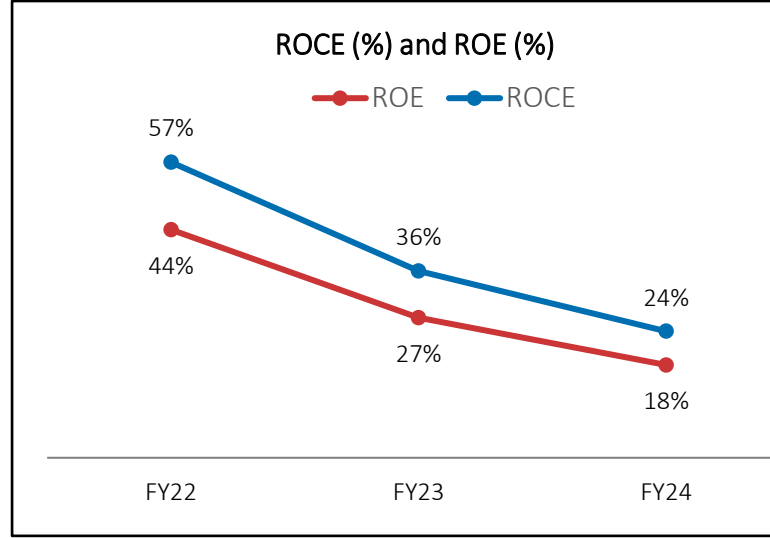
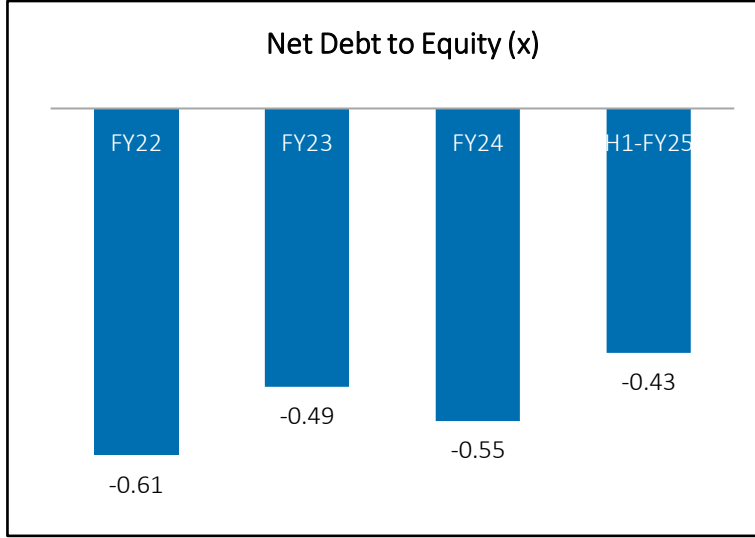
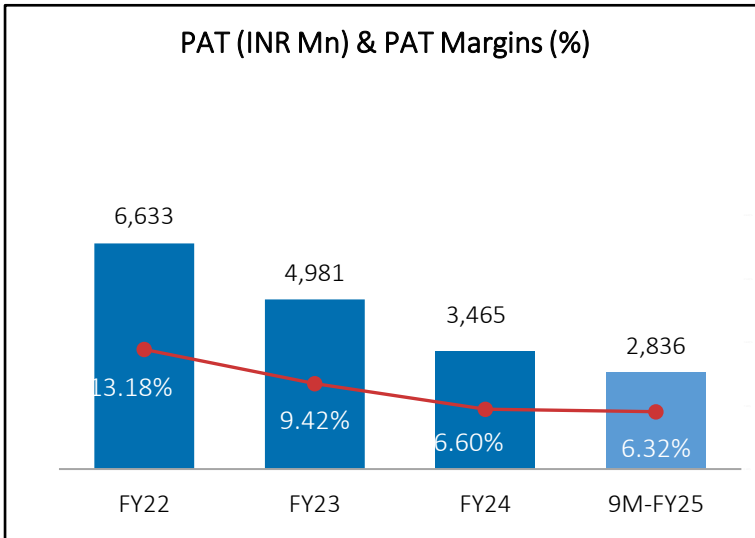
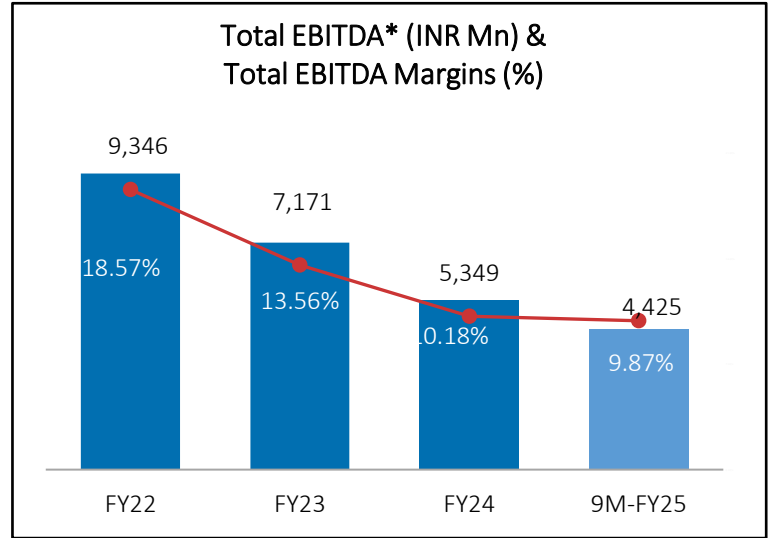
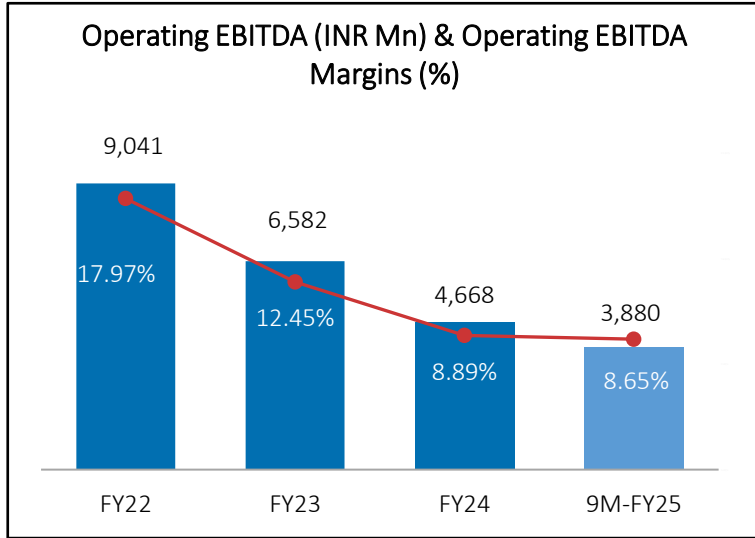
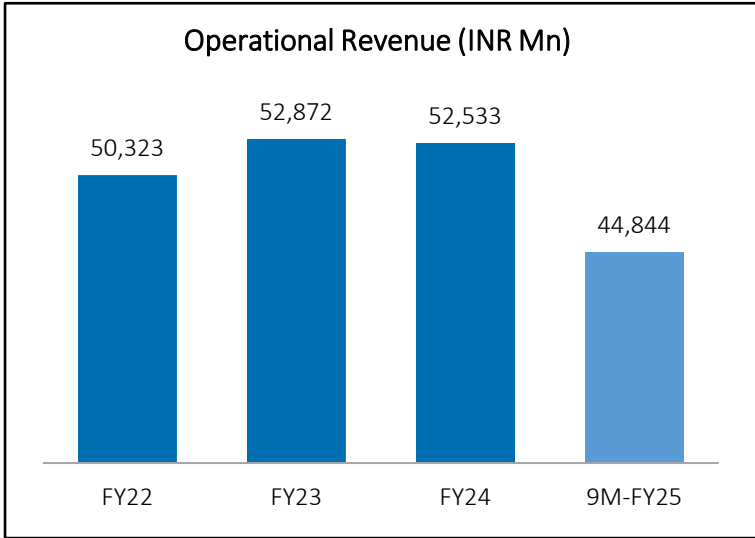


# Historical Balance Sheet

Particulars (INR Mn)	FY23	FY24	H1- FY25
<b>EQUITY</b>	<b>18,439</b>	<b>20,191</b>	<b>20,998</b>
Share Capital	376	376	376
Other Equity	18,063	19,815	20,622
<b>LIABILITIES</b>			
<b>NON-CURRENT LIABILITIES</b>	<b>450</b>	<b>1,470</b>	<b>1,514</b>
Long term provision	36	73	77
Other non-current liabilities	35	41	41
Lease Liabilities	24	983	1,021
Deferred tax liability (net)	354	373	375
<b>CURRENT LIABILITIES</b>	<b>8,421</b>	<b>8,987</b>	<b>7,436</b>
Financial liabilities			
(i) Trade Payables	7,820	8,089	6,296
(ii) Other Financial liabilities	296	455	540
(iii) Lease Liabilities	143	159	209
Other Current liabilities	134	193	275
Provisions	22	29	32
Curent Tax Liabilities (net)	6	62	84
<b>TOTAL LIABILITIES</b>	<b>8,871</b>	<b>10,457</b>	<b>8,950</b>
<b>GRAND TOTAL - EQUITY AND LIABILITIES</b>	<b>27,310</b>	<b>30,648</b>	<b>29,948</b>

Particulars (INR Mn)	FY23	FY24	H1- FY25
<b>NON-CURRENT ASSETS</b>	<b>7,026</b>	<b>10,621</b>	<b>12,163</b>
Property, plant & equipment	5,115	6,575	6,613
Intangible Assets	4	3	8
Capital Work-in-progress	1,080	2,326	3,247
Right to use assets	147	1,110	1,177
Financial assets			
(i) Loans	19	13	15
(ii) Other financial assets	254	64	102
Other non-current assets	407	530	1,001
<b>CURRENT ASSETS</b>	<b>20,284</b>	<b>20,027</b>	<b>17,785</b>
Inventories	6,469	4,806	4,608
Financial assets			
(i) Investment in Liquid Scheme of MF	5,626	5,718	3,147
(ii) Trade Receivable	3,623	3,950	3,646
(iii) Cash and cash equivalents	818	2,159	2,554
(iv) Other bank balances	2,677	3,045	3,371
(v) Loans	9	8	8
(vi) Other financial assets	563	74	185
Current tax assets (net)	130	48	40
Other current assets	369	219	226
<b>GRAND TOTAL - ASSETS</b>	<b>27,310</b>	<b>30,648</b>	<b>29,948</b>

# Key Financial Highlights

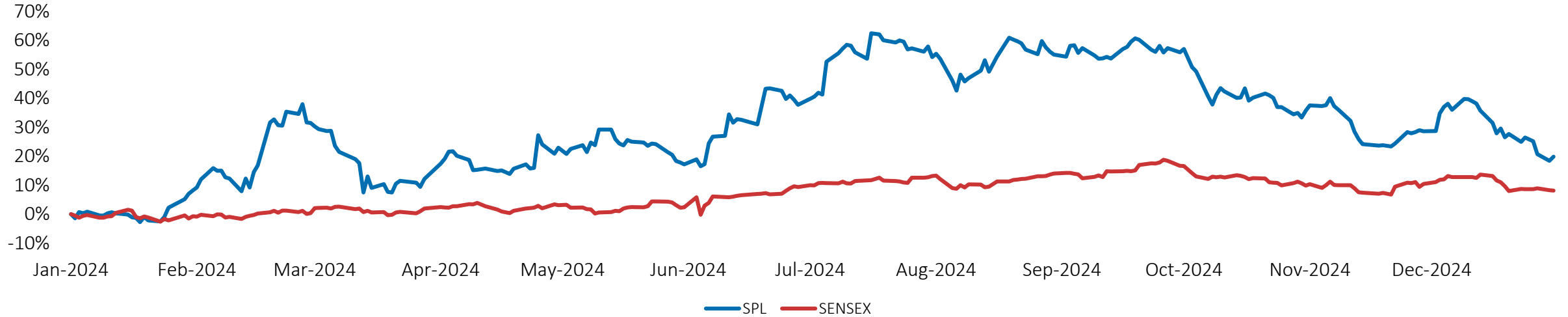


\*Total EBITDA includes other income

# Capital Market Information



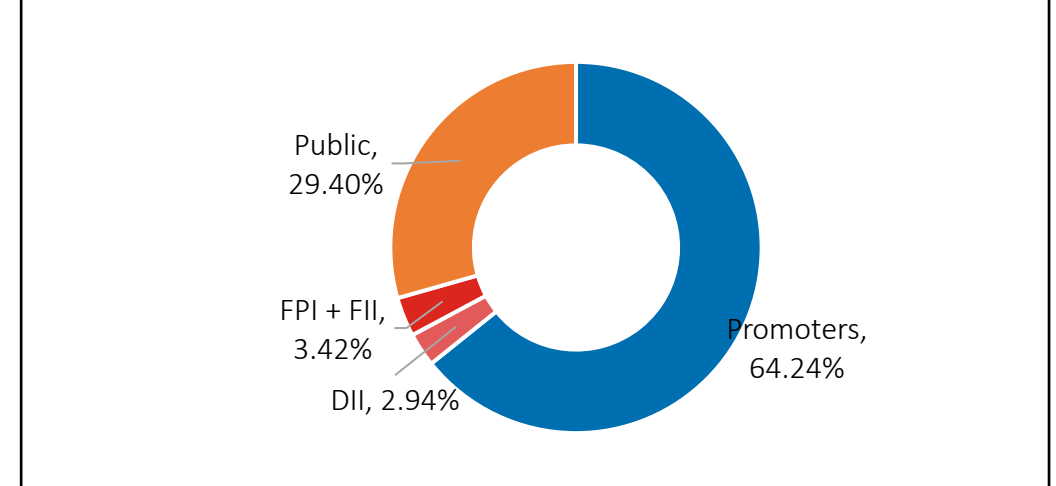
Share Price Movement (Up to 31<sup>st</sup> December, 2024)



Market Data (INR) (As on 31<sup>st</sup> December, 2024)

Face Value	2.0
CMP	665.5
52 Week H/L	926.3 / 522.0
Market Cap (INR Mn)	1,25,141.51
Shares O/S (Mn)	188.0
Avg. Vol. ('000)	111.4

Shareholding Pattern (As on 31<sup>st</sup> December 2024)





## Supreme Petrochem Limited Disclaimer:

*No representation or warranty, express or implied, is made as to, and no reliance should be placed on the fairness, accuracy, completeness or correctness of the information or opinions contained in this presentation. Such information and opinions are in all events not current after the date of this presentation. Certain statements made in this presentation may not be based on historical information or facts and may be "forward looking statements" based on the currently held beliefs and assumptions of the management of Supreme Petrochem Limited (Supreme), which are expressed in good faith and in their opinion reasonable, including those relating to the Company's general business plans and strategy, its future financial condition and growth prospects and future developments in its industry and its competitive and regulatory environment.*

*Forward-looking statements involve known and unknown risks, uncertainties and other factors, which may cause the actual results, financial condition, performance or achievements of the Company or industry results to differ materially from the results, financial condition, performance or achievements expressed or implied by such forward-looking statements, including future changes or developments in the Company's business, its competitive environment and political, economic, legal and social conditions. Further, past performance is not necessarily indicative of future results. Given these risks, uncertainties and other factors, viewers of this presentation are cautioned not to place undue reliance on these forward-looking statements. The Company disclaims any obligation to update these forward- looking statements to reflect future events or developments.*

*This presentation is for general information purposes only, without regard to any specific objectives, financial situations or informational needs of any particular person. This presentation does not constitute an offer or invitation to purchase or subscribe for any securities in any jurisdiction, including the United States. No part of it should form the basis of or be relied upon in connection with any investment decision or any contract or commitment to purchase or subscribe for any securities. None of our securities may be offered or sold in the United States, without registration under the U.S. Securities Act of 1933, as amended, or pursuant to an exemption from registration there from.*

*This presentation is confidential and may not be copied or disseminated, in whole or in part, and in any manner.*

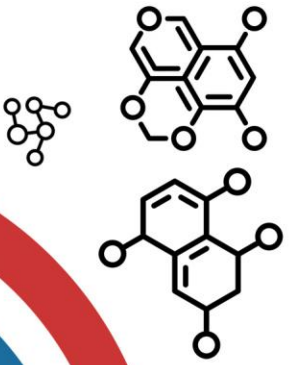
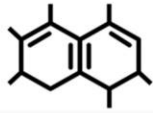
## Valorem Advisors Disclaimer:

*Valorem Advisors is an Independent Investor Relations Management Service company. This Presentation has been prepared by Valorem Advisors based on information and data which the Company considers reliable, but Valorem Advisors and the Company makes no representation or warranty, express or implied, whatsoever, and no reliance shall be placed on, the truth, accuracy, completeness, fairness and reasonableness of the contents of this Presentation. This Presentation may not be all inclusive and may not contain all of the information that you may consider material. Any liability in respect of the contents of, or any omission from, this Presentation is expressly excluded. Valorem Advisors also hereby certifies that the directors or employees of Valorem Advisors do not own any stock in personal or company capacity of the Company under review.*

For further details, please feel free to contact our Investor Relations Representatives:



Mr. Anuj Sonpal  
Valorem Advisors  
Tel: +91-22-49039500  
Email: [supreme@valoremadvisors.com](mailto:supreme@valoremadvisors.com)



**THANK YOU**



**Supreme Petrochem Limited**